



SPYDER[®] PRO[™]

Electric Pressure Washer

Assembly, Care and Use Instructions

Read carefully. Retain these instructions and attach receipt to manual for future reference.



ALWAYS WEAR EYE PROTECTION TO PREVENT INJURY TO EYES WHEN OPERATING THE POWER WASHER.

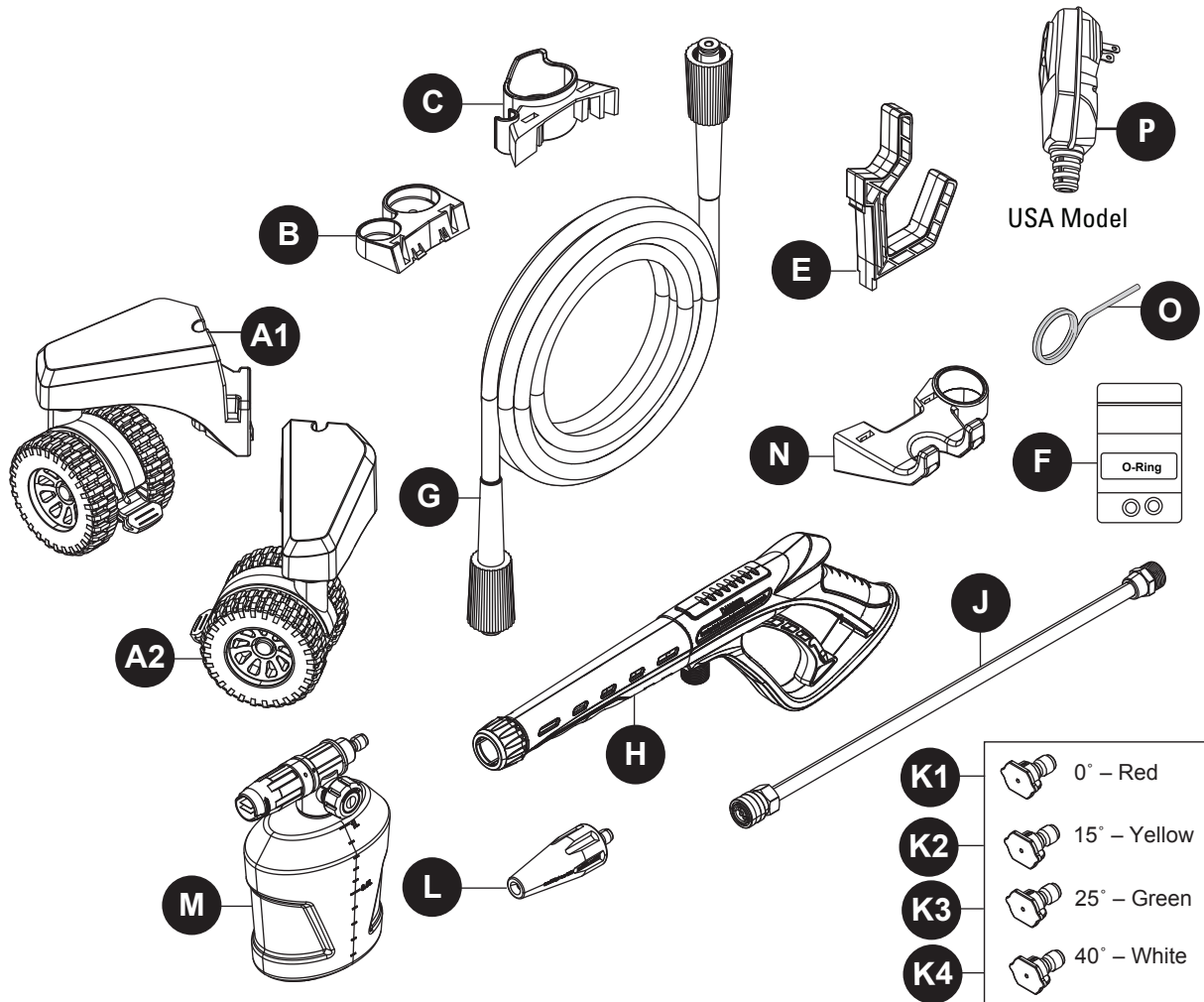


Questions, problems, missing parts?

Before returning to your retailer, contact our customer service department at 1-855-770-7529 or custserv@powerplaypro.com, 8:00 a.m. - 4:00 p.m., EST, Monday - Friday. www.powerplaypro.com

Replacement Parts

For replacement parts, call our customer service department at 1-855-770-7529. 8:00 a.m. - 4:00 p.m., EST, Monday - Friday or order online at www.powerplaypro.com.



Part	Description	Part #
A1	Caster	PWXA152-1
A2	Caster	PWXA152-2
B	Lower Spray Gun Holder	PWXA151
C	Upper Spray Gun Holder	PWXA150
E	Hose Holder Bracket	PWXA153
F	O-Ring Replacement Kit	PWXA096
G	25' Flexwash® Pro Steel Reinforced Hose with M22 Fittings	PWXA155
H	Pro Spray Gun with M22 fitting	PWXA008-B
J	Steel Lance with QC Connector	PWXA012

Part	Description	Part #
K1	0° High Pressure Spray Tip - Red	PWXA015
K2	15° High Pressure Spray Tip - Yellow	PWXA016
K3	25° High Pressure Spray Tip - Green	PWXA020
K4	40° High Pressure Spray Tip - White	PWXA146
L	Turbo Nozzle	PWXA032
M	1000 ML Foam Cannon with QC Tip	PWXA144
N	Foam Cannon Bracket	PWXA154
O	Spray Tip Cleaner	PWXA123
P	GFCI Assembly (USA Model)	PWXA092